

The Music ALPHABET!

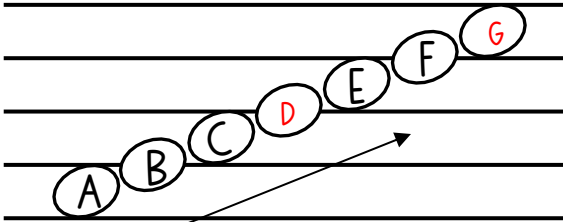
Directions: Fill in the missing letters.

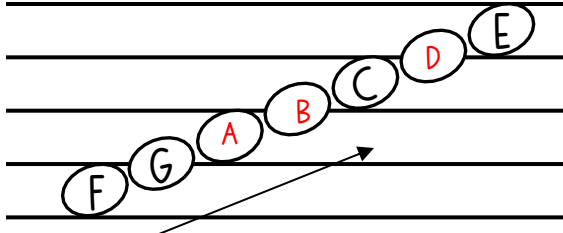
Going Up!

1. A B C D E F G
→

2. A B C D E F G
→

3. A B C D E F G
→

4. 

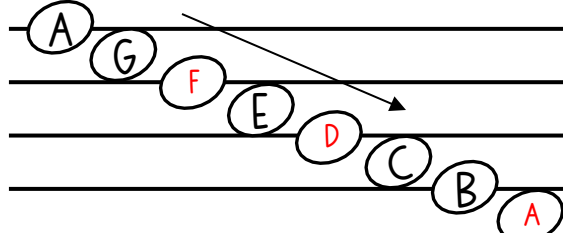
5. 

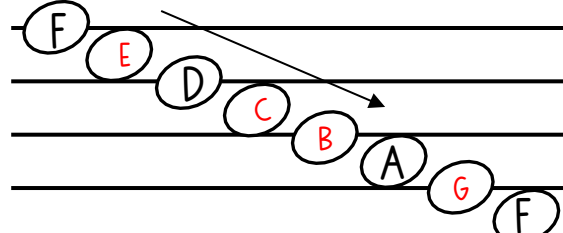
Going Down!

6. G F E D C B A
→

7. A G F E D C B
→

8. G F E D C B A
→

9. 

10. 

LABEL TREBLE CLEF NOTES

Directions: Fill in the missing space note letters. Remember the word 'FACE'.

A musical staff with a treble clef. The notes are placed on the following lines and spaces from bottom to top: F (space), C (line), A (space), F (space), A (space), E (line), C (line).

Directions: Fill in the missing line note letters. Remember the saying 'Elephants Got Big Dirty Feet'.

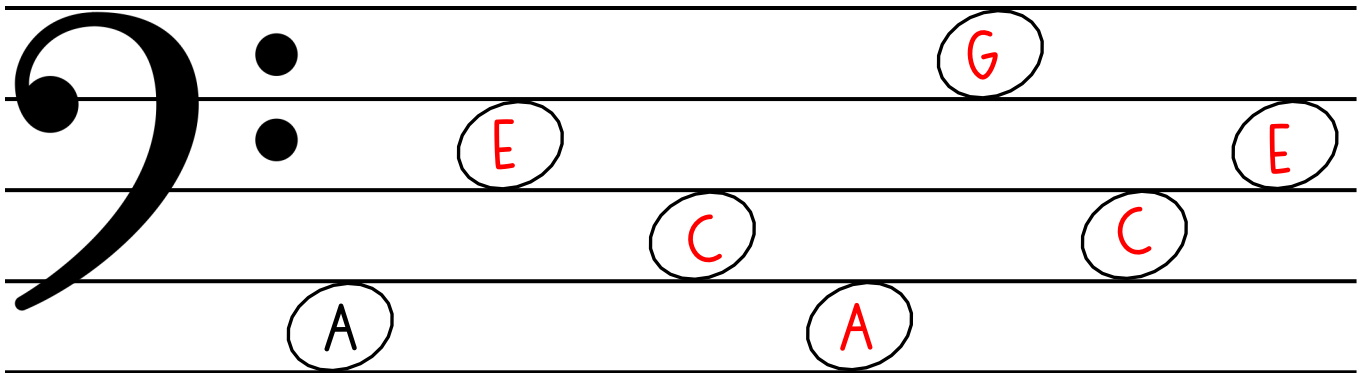
A musical staff with a treble clef. The notes are placed on the following lines and spaces from bottom to top: E (space), G (space), D (line), B (space), F (line), D (line), B (line), E (space).

Directions: Fill in the missing note letters. Remember 'FACE' and 'Elephants Got Big Dirty Feet'.

A musical staff with a treble clef. The notes are placed on the following lines and spaces from bottom to top: A (space), E (space), C (line), G (space), F (line), D (space), E (space), B (space).

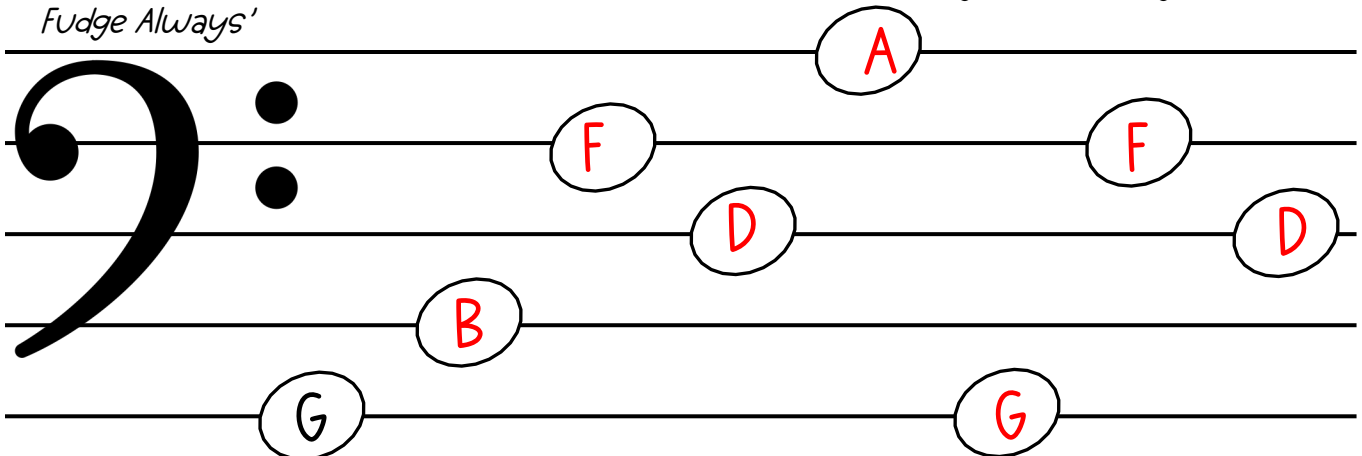
LABEL BASS CLEF NOTES

Directions: Fill in the missing space note letters. Remember 'All Cows Eat Grass'



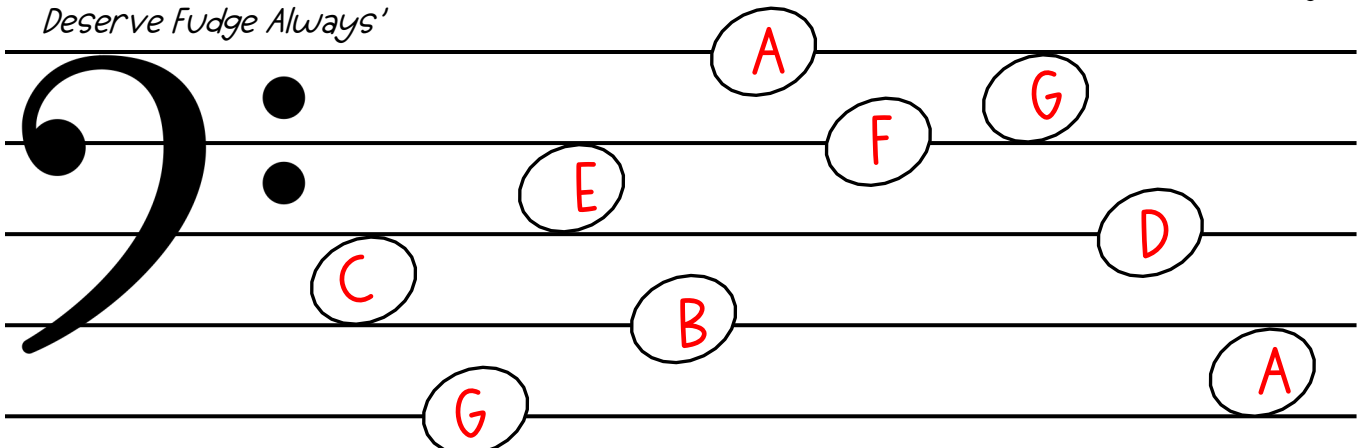
A five-line bass clef staff with a large bass clef on the left. The notes are placed in the following positions: G on the top line, E on the first space, C on the second line, C on the second space, A on the third line, and A on the third space.

Directions: Fill in the missing line note letters. Remember the saying 'Good Boys Deserve Fudge Always'



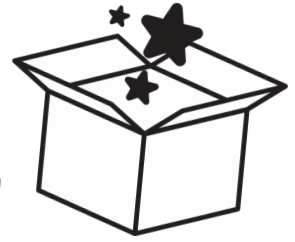
A five-line bass clef staff with a large bass clef on the left. The notes are placed in the following positions: A on the top line, F on the first space, D on the second line, D on the second space, B on the third line, G on the third space, and G on the bottom line.

Directions: Fill in the missing note letters. Remember 'All Cows Eat Grass' and 'Good Boys Deserve Fudge Always'



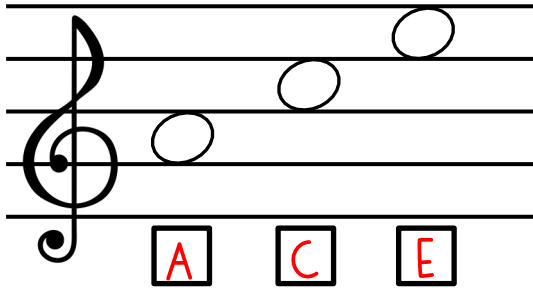
A five-line bass clef staff with a large bass clef on the left. The notes are placed in the following positions: A on the top line, G on the first space, F on the second line, E on the second space, D on the third line, C on the third space, B on the bottom line, A on the bottom space, and G on the bottom line.

SOLVE THE RIDDLE!

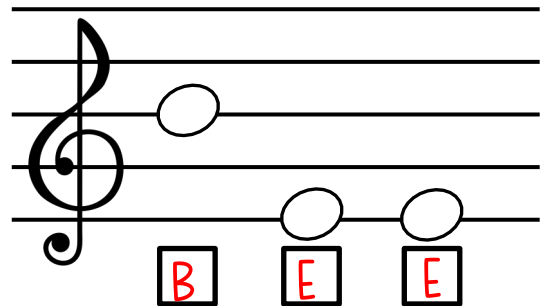


Directions: Write the letter names below each note to solve the word.

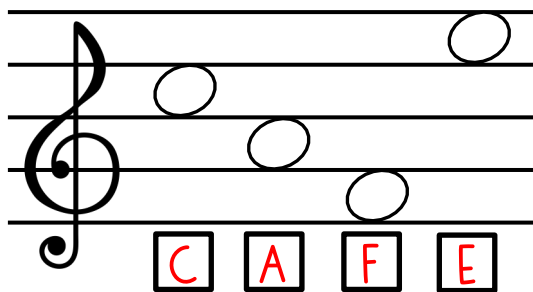
1. Clue: I'm just one, but I'm the best,
In cards or games, I beat the rest.
What am I?



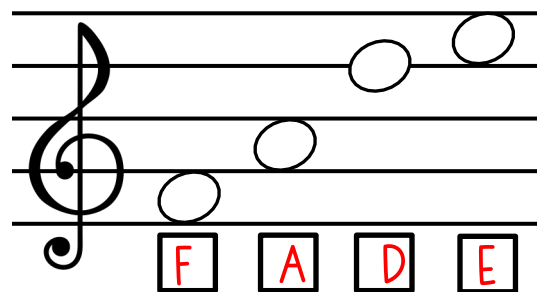
4. Clue: I dance to speak but have no voice,
In fields of blooms, I make my choice.
What am I?



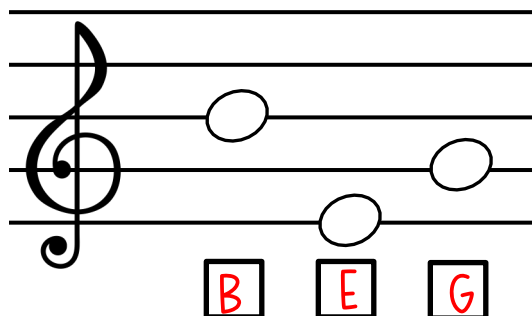
2. Clue: I'm not your home, I'm not a store,
But people sit and chat some more.
What am I?



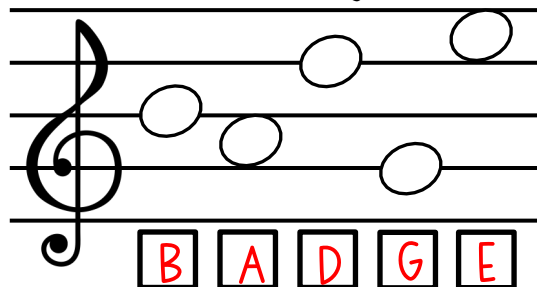
5. Clue: I steal the color, blur the line,
What once was bold becomes less fine.
What am I?



3. Clue: Oh my knees, I make a scene,
for one more cookie- know what I mean?
What am I?



6. Clue: I'm pinned or sewn for all to see,
A sign of rank or victory. What am I?



SOLVE THE RIDDLE!



Directions: Write the letter names below each note to solve the word.

1. Clue: I'm home to creatures big and small,
With metal bars instead of walls. What am I?

C A G E

2. Clue: I'm not a sound, yet stories I tell,
I shape the face you know so well.
What am I?

A G E

3. Clue: I'm tiny and round, found in a string,
I'm used to make a pretty thing.
What am I?

B E A D

4. Clue: I may not hear the words you say
But I can listen in my own way.
What am I?

D E A F

5. Clue: I'm popular now but not for long,
A short-lived trend that feels so strong.
What am I?

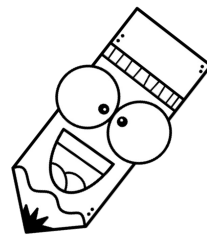
F A D

6. Clue: Once there was a hungry sound,
Now there's none—it can't be found.
What am I?

F E D

THE MUSIC STAFF

Directions: Write the correct number for the lines and spaces.
Remember to always count from the bottom up!



~ Lines ~

_____ ← Line **5**

_____ ← Line **4**

_____ ← Line **3**

_____ ← Line **2**

_____ ← Line **1**

~ Spaces ~

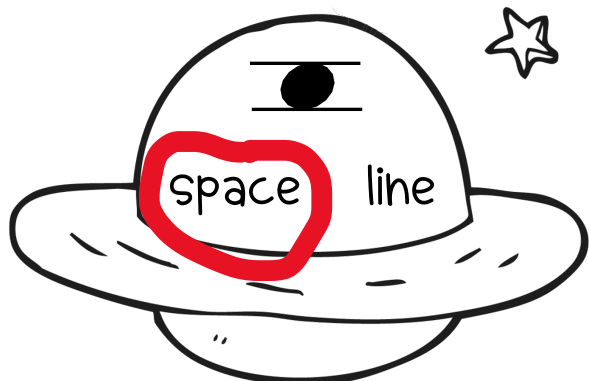
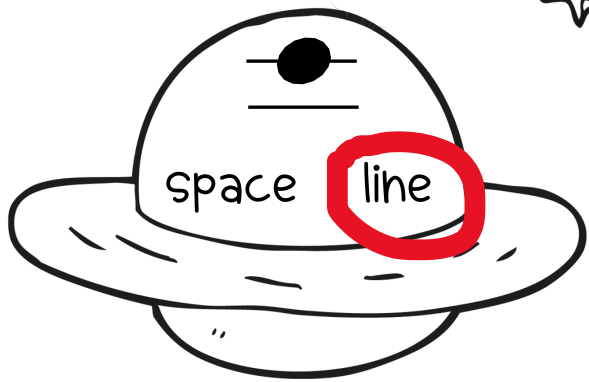
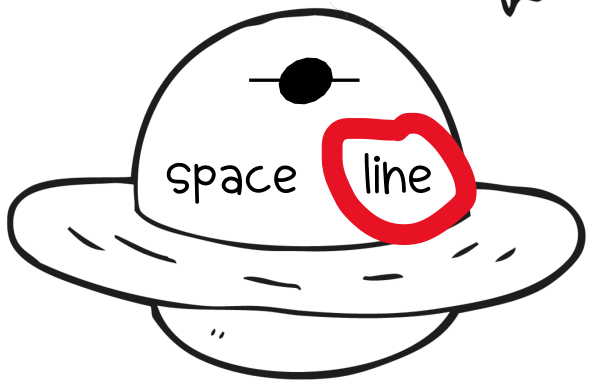
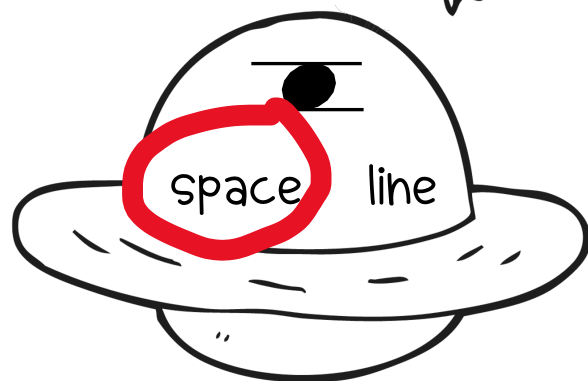
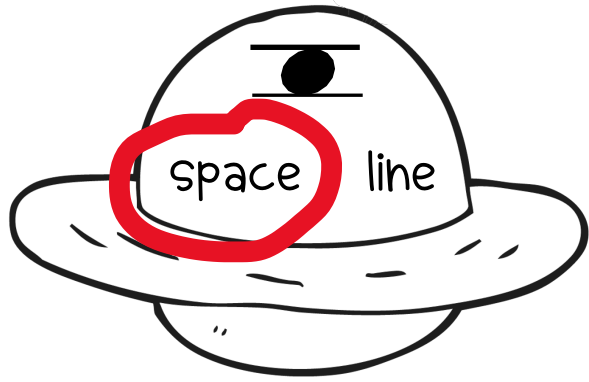
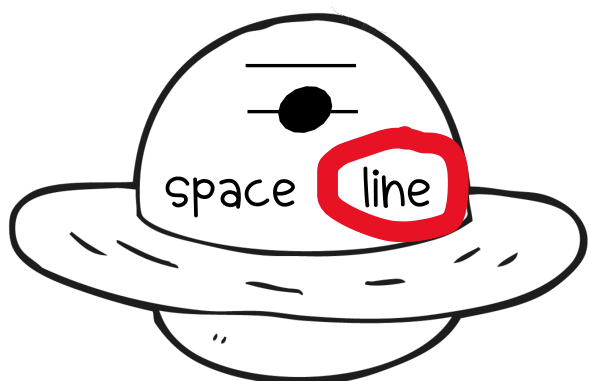
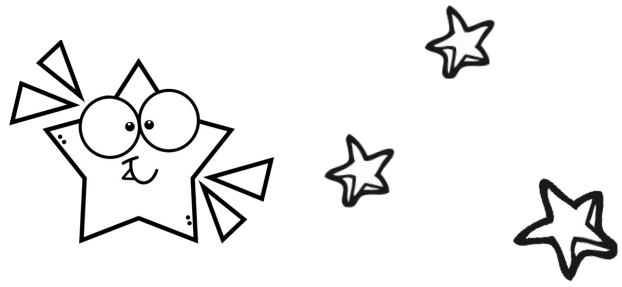
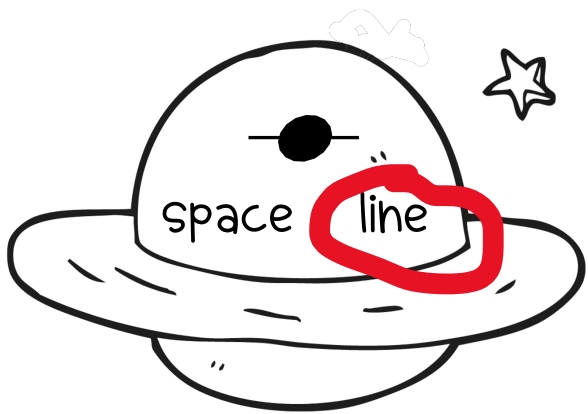
_____ ← Space **4**

_____ ← Space **3**

_____ ← Space **2**

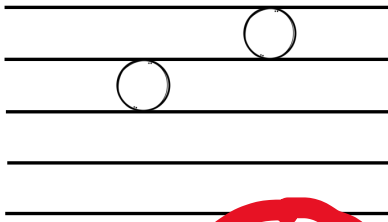
_____ ← Space **1**

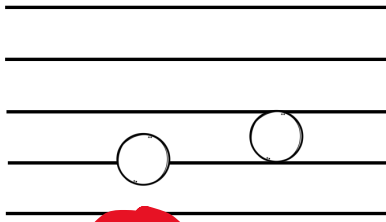
Directions: Circle if the note is a line note, or a space note.



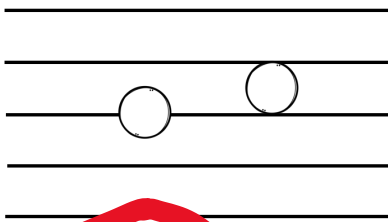
STEP OR SKIP?

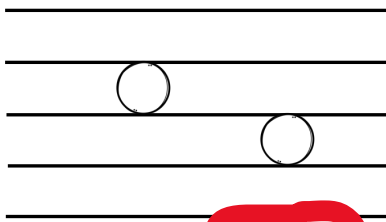
Directions: Circle step or skip for each example.

1. 
step **skip**

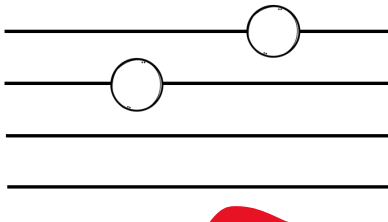
2. 
step skip

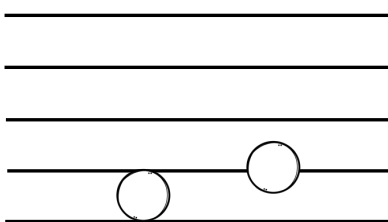


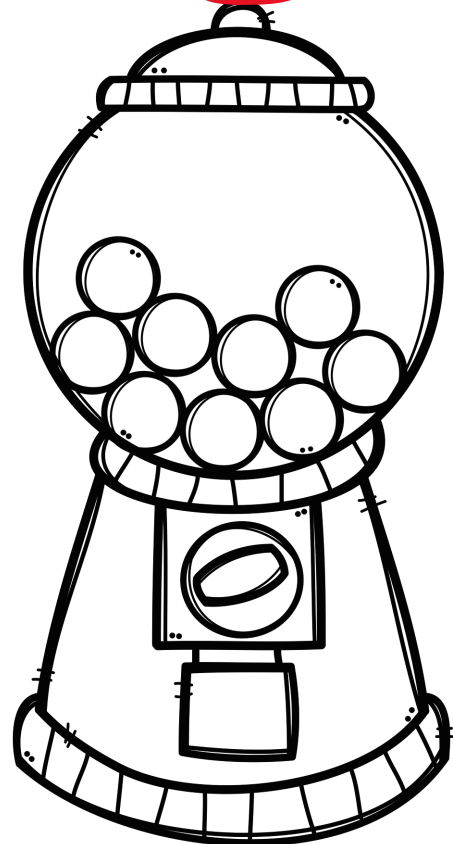
3. 
step skip

4. 
step **skip**



5. 
step **skip**

6. 
step skip



COLOR THE GRAND STAFF

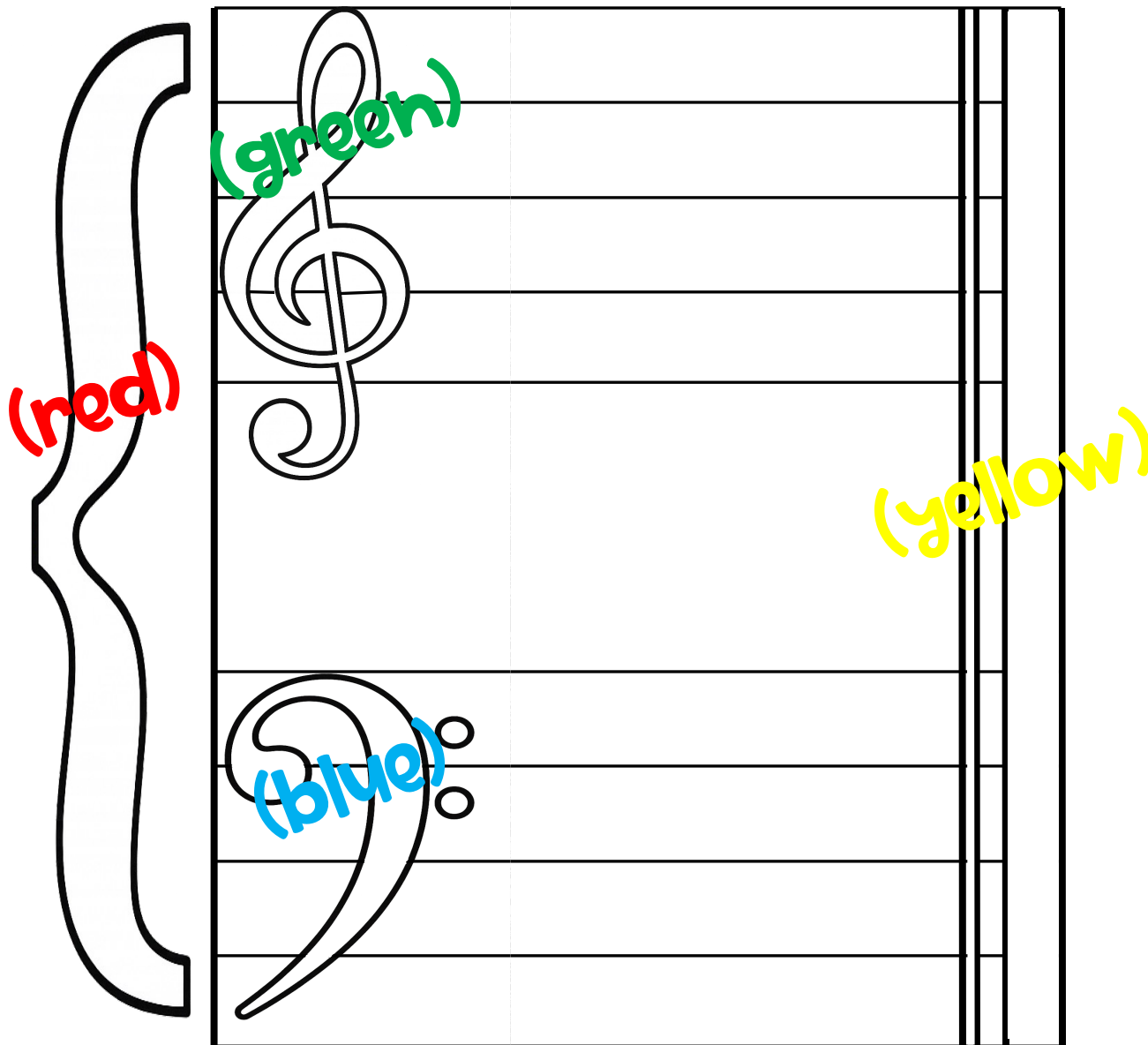
Directions: Color the music symbols the colors listed below.

treble clef = 

brace = 

bass clef = 

double bar line = yellow



MUSIC SYMBOLS

Directions: Draw a line from the symbol to the correct word.

Bass Clef

Bar Line

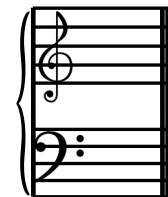
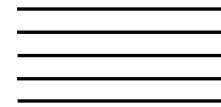
Double Bar Line

Music Staff

Brace

Treble Clef

Grand Staff



Music Staff Vocabulary Words



step

skip

staff

space note

double bar line

bass clef

line note

treble clef

bar line

grand staff