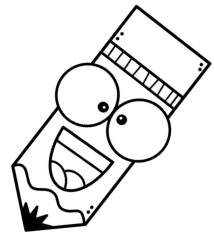




My Music Notation Workbook



Name: _____

Copyright © 2025 Abigail Mettry

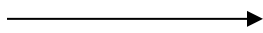
ALL RIGHTS RESERVED. NO PART OF THIS PUBLICATION, INCLUDING ANY AND ALL AUDIO, MAY BE REPRODUCED, DISTRIBUTED, OR TRANSMITTED IN ANY FORM OR BY ANY MEANS WITHOUT PRIOR WRITTEN PERMISSION OF THE PUBLISHER.

The Music ALPHABET!

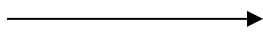
Directions: Fill in the missing letters.

Going Up!

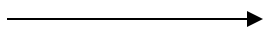
1. A B C _ E F G



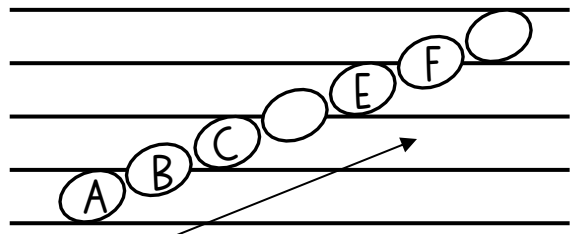
2. A _ C D E F G



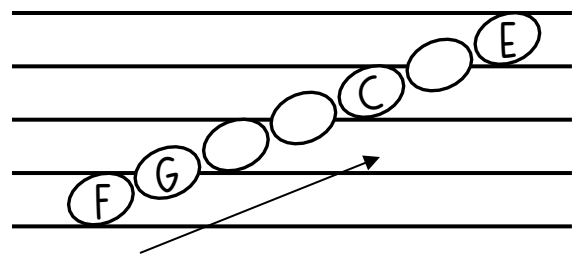
3. A B C D E F _



4.

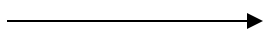


5.

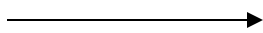


Going Down!

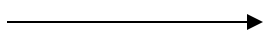
6. G F E D C _ A



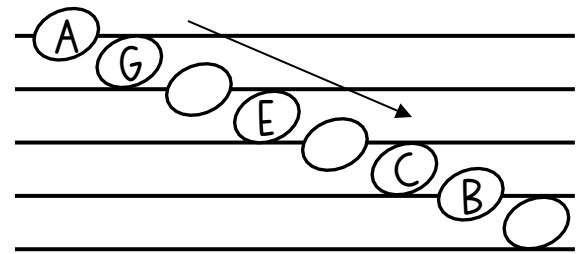
7. A _ F E D C B



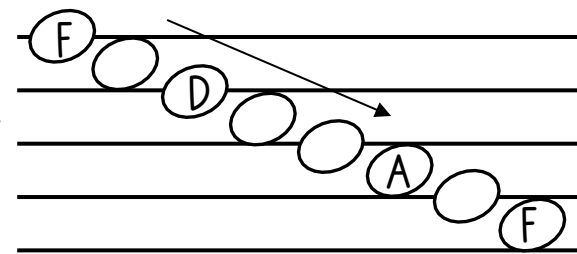
8. G F E D C B _

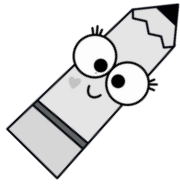


9.

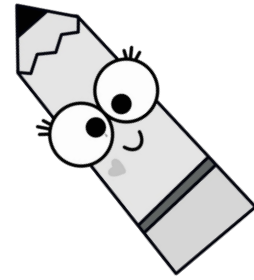


10.

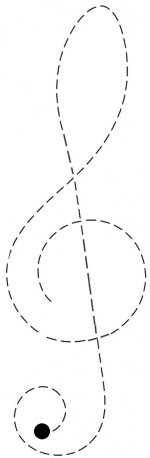




TRACE IT!

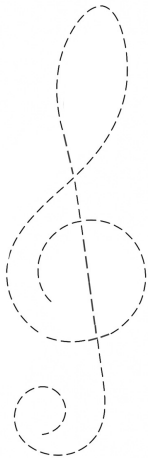


Directions: Trace the treble clefs, then draw your own.



Start →

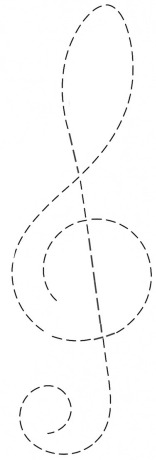
Trace



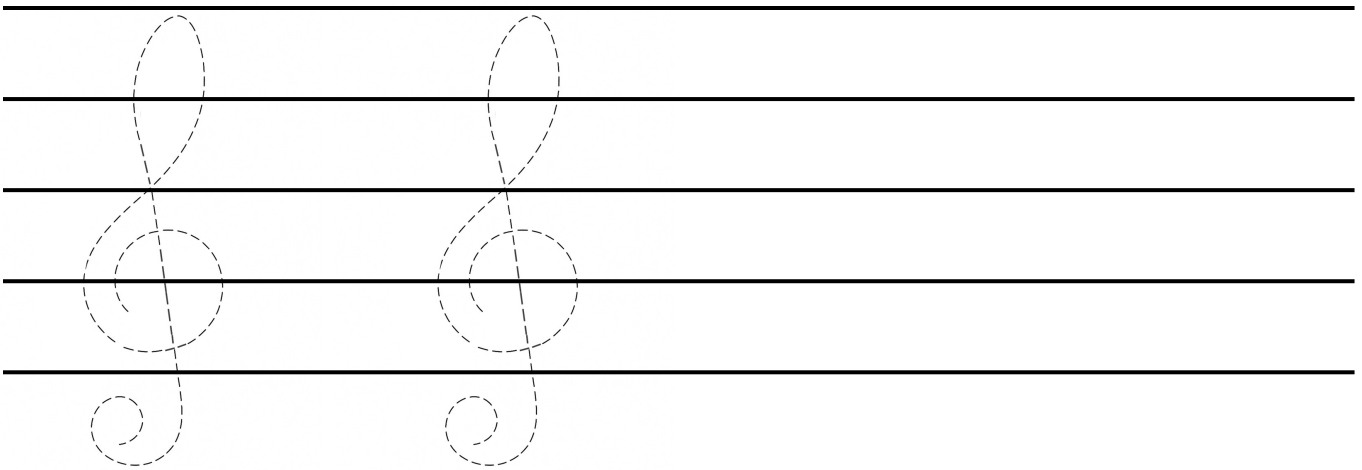
Trace



Trace



Trace



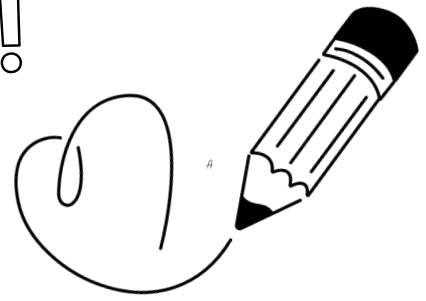
Trace

Trace

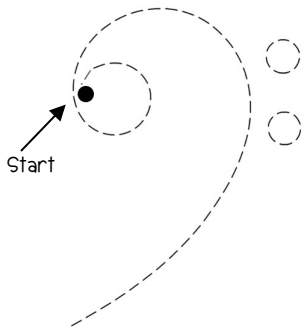
(Draw your own)

(Draw your own)

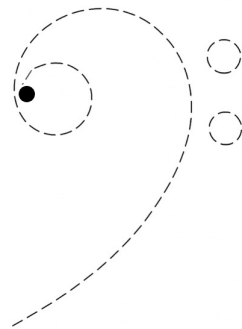
TRACE IT!



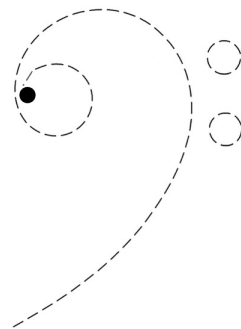
Directions: Trace the bass clefs, then draw your own.



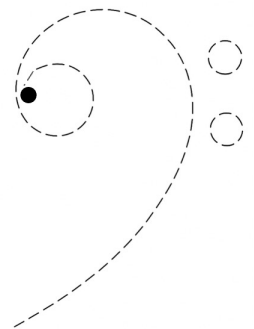
Trace



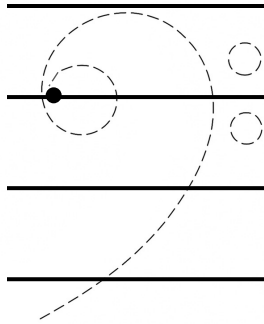
Trace



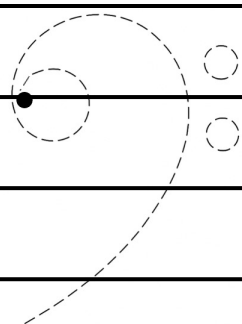
Trace



Trace



Trace



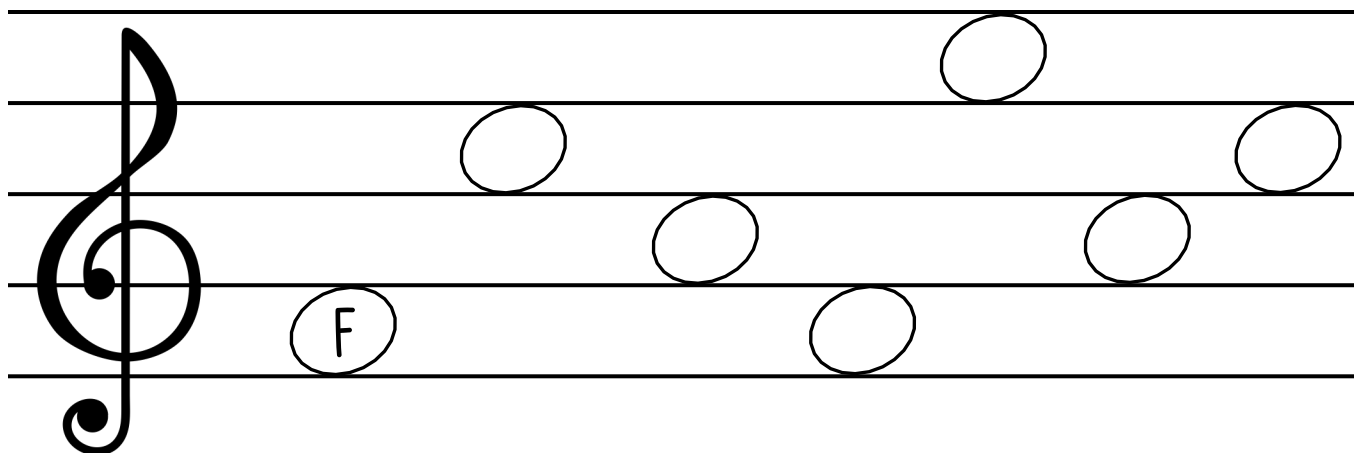
Trace

Draw your own!

Draw your own!

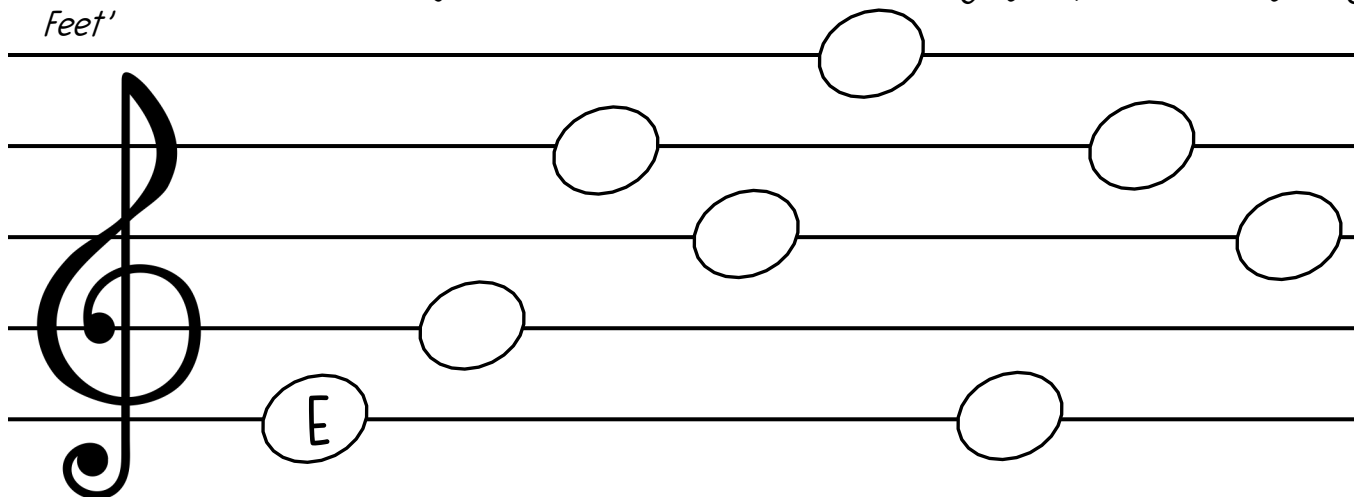
LABEL TREBLE CLEF NOTES

Directions: Fill in the missing space note letters. *Remember the word 'FACE'.*



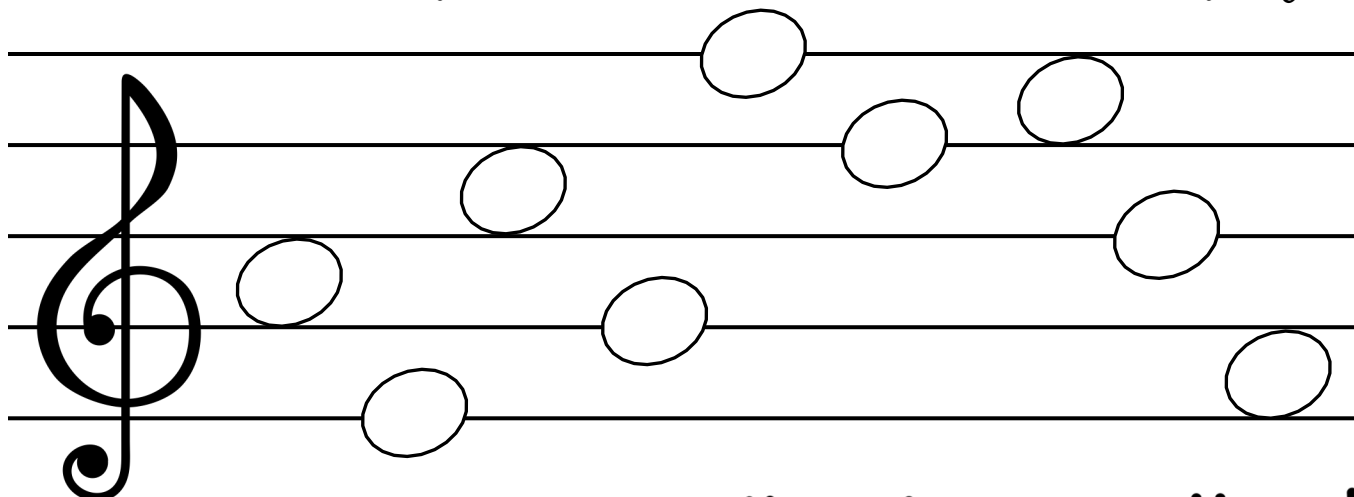
A musical staff with a treble clef. The notes are placed on the lines and spaces as follows: F (on the first space), a blank circle (on the second line), a blank circle (on the second space), a blank circle (on the third line), a blank circle (on the third space), a blank circle (on the fourth line), and a blank circle (on the fourth space).

Directions: Fill in the missing line note letters. *Remember the saying 'Elephants Got Big Dirty Feet'.*



A musical staff with a treble clef. The notes are placed on the lines and spaces as follows: E (on the first line), a blank circle (on the first space), a blank circle (on the second line), a blank circle (on the second space), a blank circle (on the third line), a blank circle (on the third space), a blank circle (on the fourth line), and a blank circle (on the fourth space).

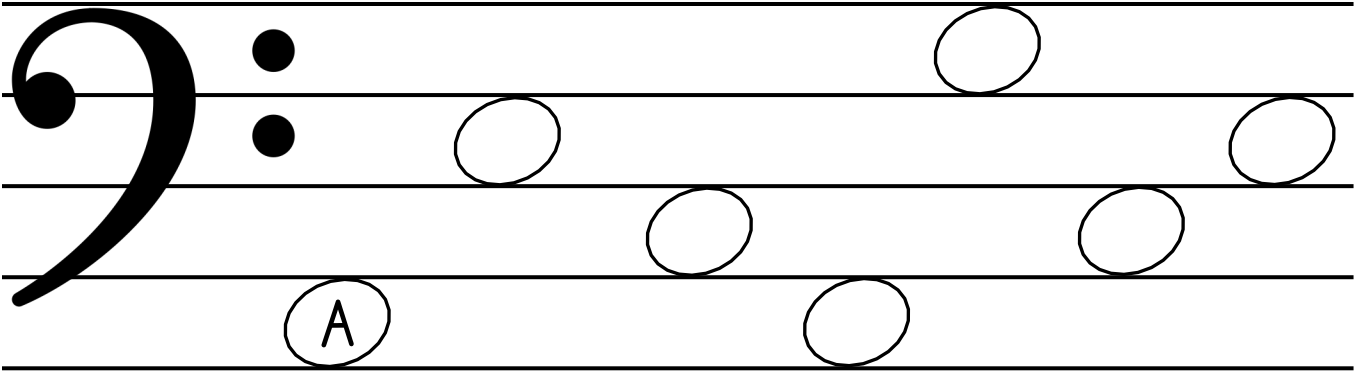
Directions: Fill in the missing note letters. *Remember 'FACE' and 'Elephants Got Big Dirty Feet'.*



A musical staff with a treble clef. The notes are placed on the lines and spaces as follows: a blank circle (on the first space), a blank circle (on the second line), a blank circle (on the second space), a blank circle (on the third line), a blank circle (on the third space), a blank circle (on the fourth line), a blank circle (on the fourth space), and a blank circle (on the fifth line).

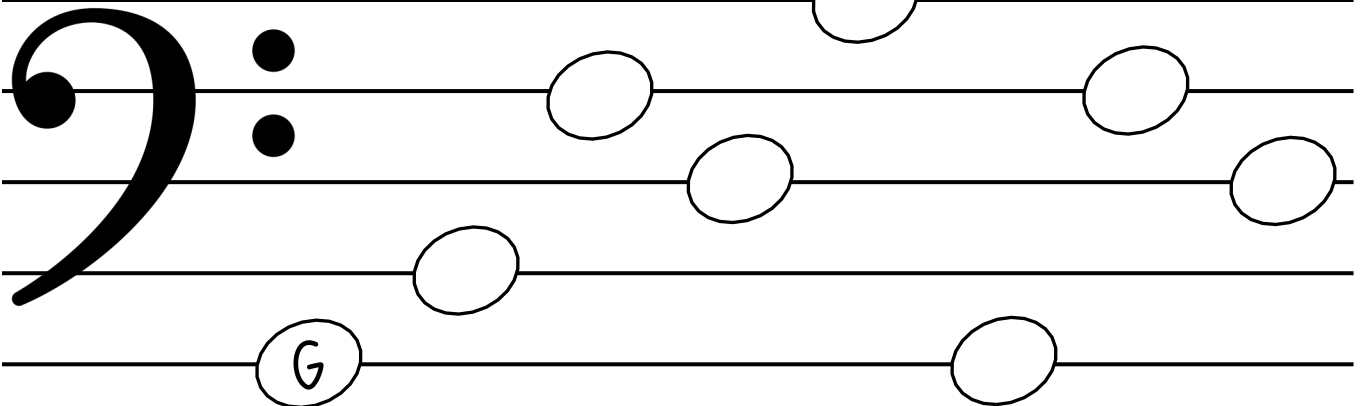
LABEL BASS CLEF NOTES

Directions: Fill in the missing space note letters. Remember 'All Cows Eat Grass'



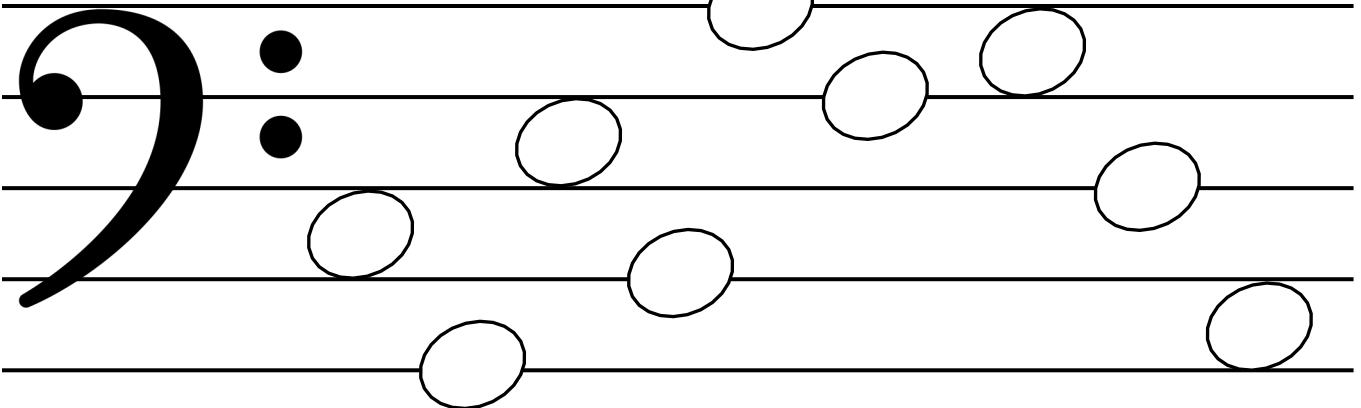
A five-line bass clef staff. The notes are: C1 (circled 'A'), G2, C3, F3, C4, G4, C5.

Directions: Fill in the missing line note letters. Remember the saying 'Good Boys Deserve Fudge Always'



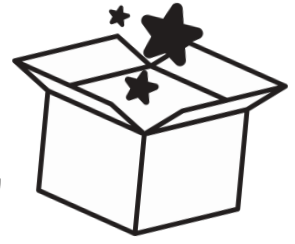
A five-line bass clef staff. The notes are: C1, G2, C3, F3, C4, G4, C5.

Directions: Fill in the missing note letters. Remember 'All Cows Eat Grass' and 'Good Boys Deserve Fudge Always'



A five-line bass clef staff. The notes are: C1, G2, C3, F3, C4, G4, C5.

SOLVE THE RIDDLE!



Directions: Write the letter names below each note to solve the word.

1. Clue: I'm just one, but I'm the best,
In cards or games, I beat the rest.
What am I?

4. Clue: I dance to speak but have no voice,
In fields of blooms, I make my choice.
What am I?

2. Clue: I'm not your home, I'm not a store,
But people sit and chat some more.
What am I?

5. Clue: I steal the color, blur the line,
What once was bold becomes less fine.
What am I?

3. Clue: Oh my knees, I make a scene,
for one more cookie- know what I mean?
What am I?

6. Clue: I'm pinned or sewn for all to see,
A sign of rank or victory. What am I?

SOLVE THE RIDDLE!



Directions: Write the letter names below each note to solve the word.

1. Clue: I'm home to creatures big and small,
With metal bars instead of walls. What am I?

□ □ □ □

2. Clue: I'm not a sound, yet stories I tell,
I shape the face you know so well.
What am I?

□ □ □ □

3. Clue: I'm tiny and round, found in a string,
I'm used to make a pretty thing.
What am I?

□ □ □ □

4. Clue: I may not hear the words you say
But I can listen in my own way.
What am I?

□ □ □ □

5. Clue: I'm popular now but not for long,
A short-lived trend that feels so strong.
What am I?

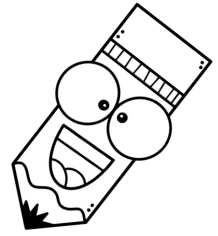
□ □ □ □

6. Clue: Once there was a hungry sound,
Now there's none—it can't be found.
What am I?

□ □ □ □

THE MUSIC STAFF

Directions: Write the correct number for the lines and spaces.
Remember to always count from the bottom up!



② Lines ②

← Line

← Line

← Line

← Line

← Line

② Spaces ②

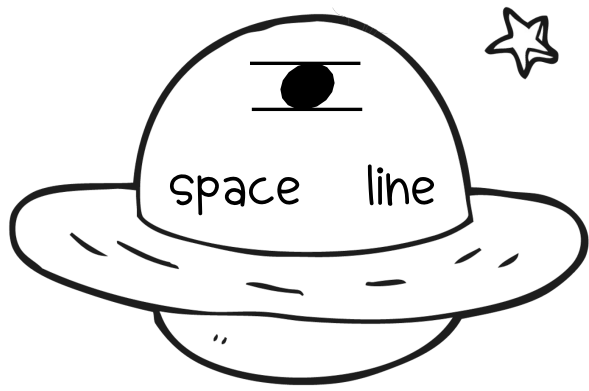
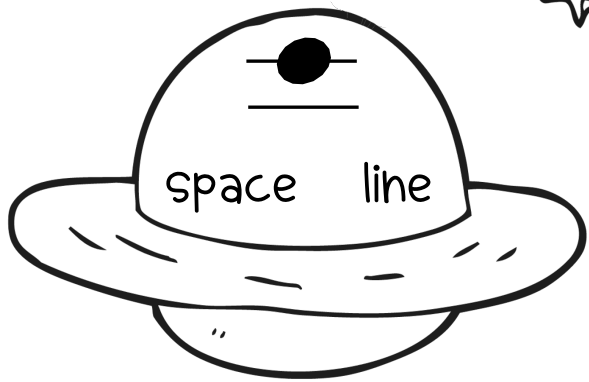
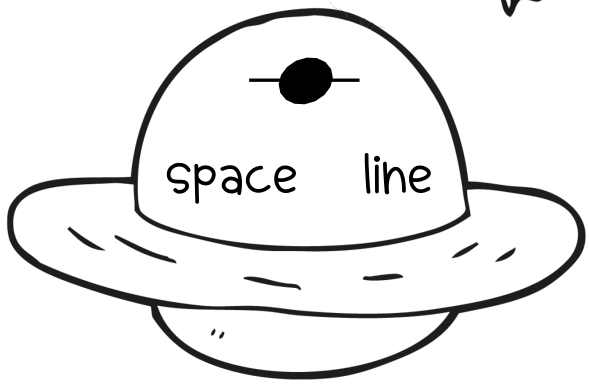
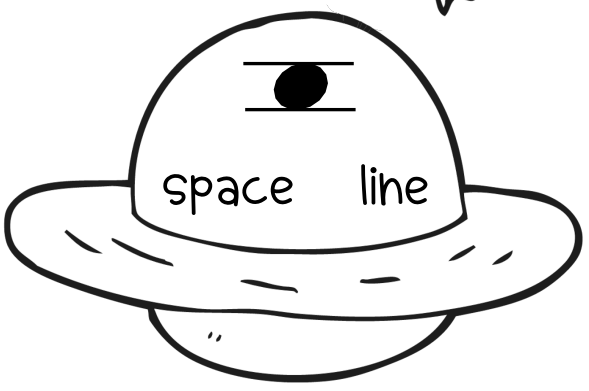
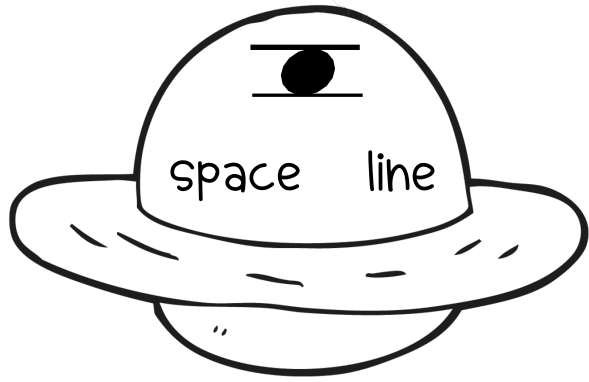
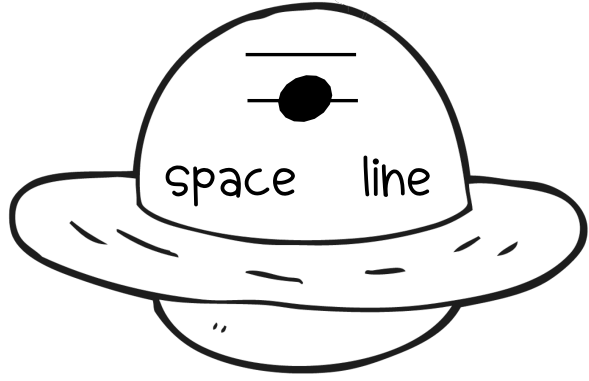
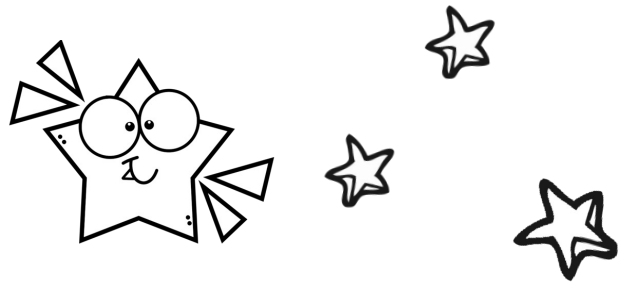
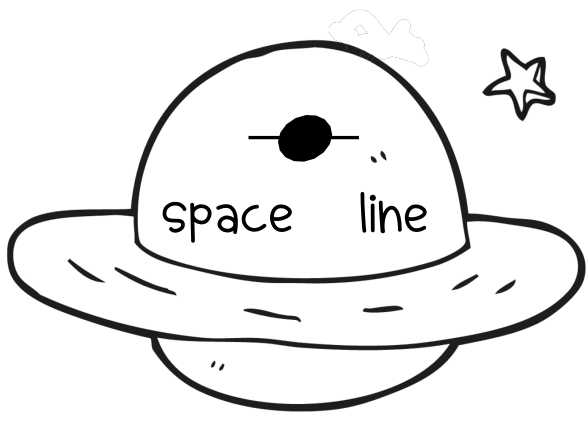
← Space

← Space

← Space

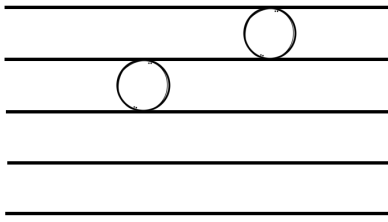
← Space

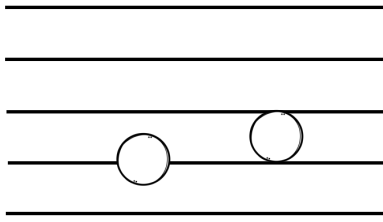
Directions: Circle if the note is a line note, or a space note.

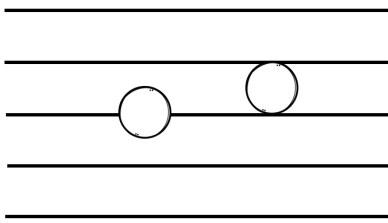


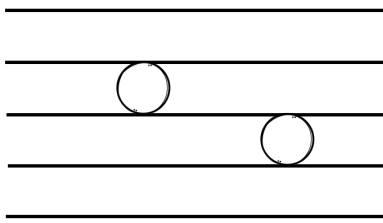
STEP OR SKIP?

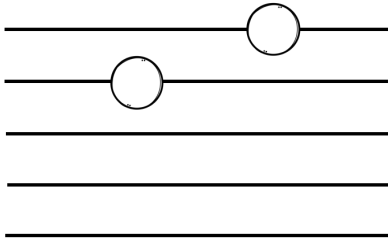
Directions: Circle step or skip for each example.

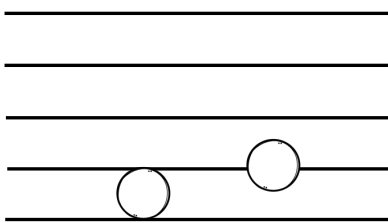
1. 
step skip

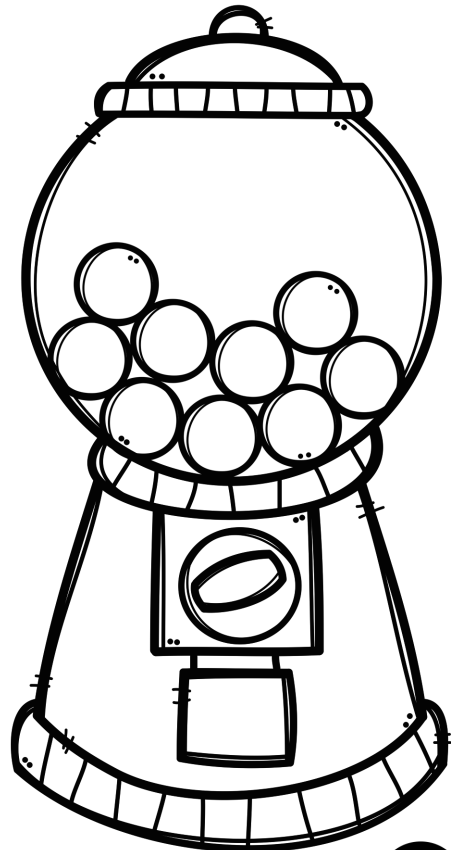
2. 
step skip

3. 
step skip

4. 
step skip

5. 
step skip

6. 
step skip



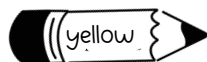
COLOR THE GRAND STAFF

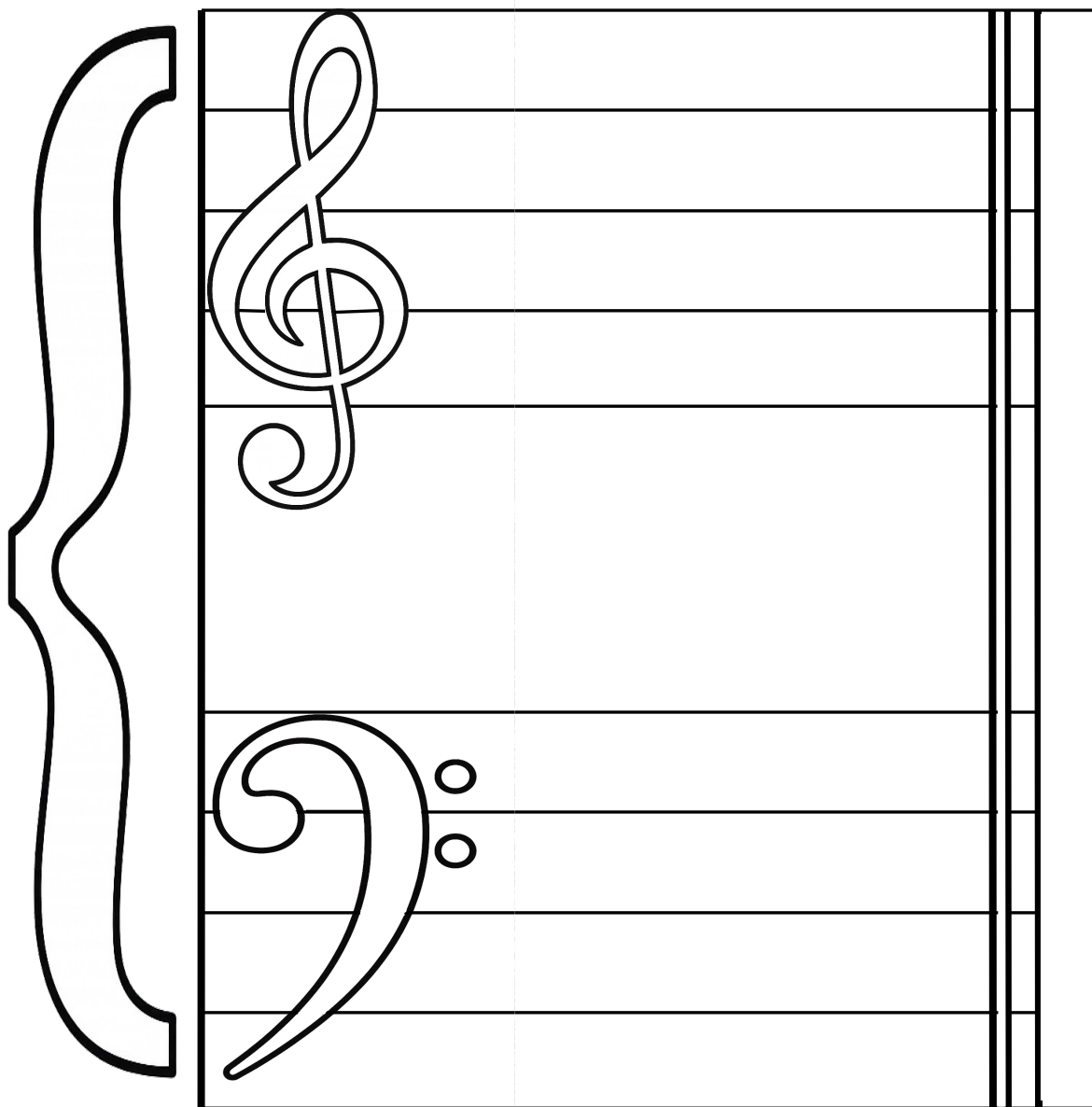
Directions: Color the music symbols the colors listed below.

treble clef = 

brace = 

bass clef = 

double bar line = 



MUSIC SYMBOLS

Directions: Draw a line from the symbol to the correct word.

Bass Clef



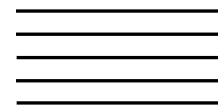
Bar Line



Double Bar Line



Music Staff



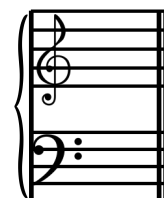
Brace



Treble Clef



Grand Staff



Music Staff Word Search

S T A F F H R W G H P E D I J
F E M A H P B R O H B Y V T V
F S P F U K B A R L I N E Z B
A C V X J V B W Y S K S Y I F
T V A P J E R Z F A K M V B J
S Q D O U B L E B A R L I N E
D Q G S P A C E N O T E U U W
N I K J G Y P K C O G I Y U H
A B K Z B I X G C Y Q I R R W
R J P C S J V V J W X E X H B
G I O L M T U X M W Q K V J W
P C N E G F E L C S S A B R P
J X P I K S Z P T R H Y B M Z
I A L I N E N O T E U N Q Y N
C G H U B T R E B L E C L E F

step

skip

staff

space note

double bar line

bass clef

line note

treble clef

bar line

grand staff